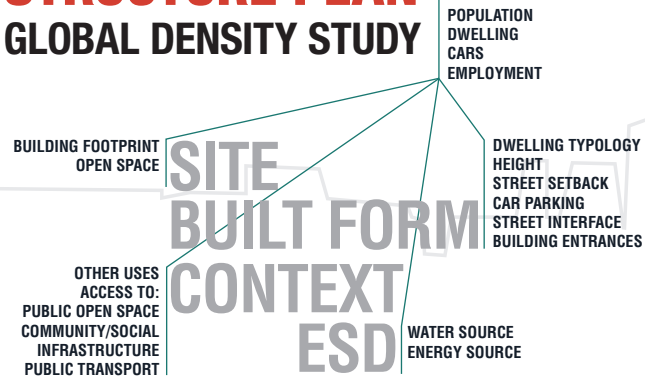


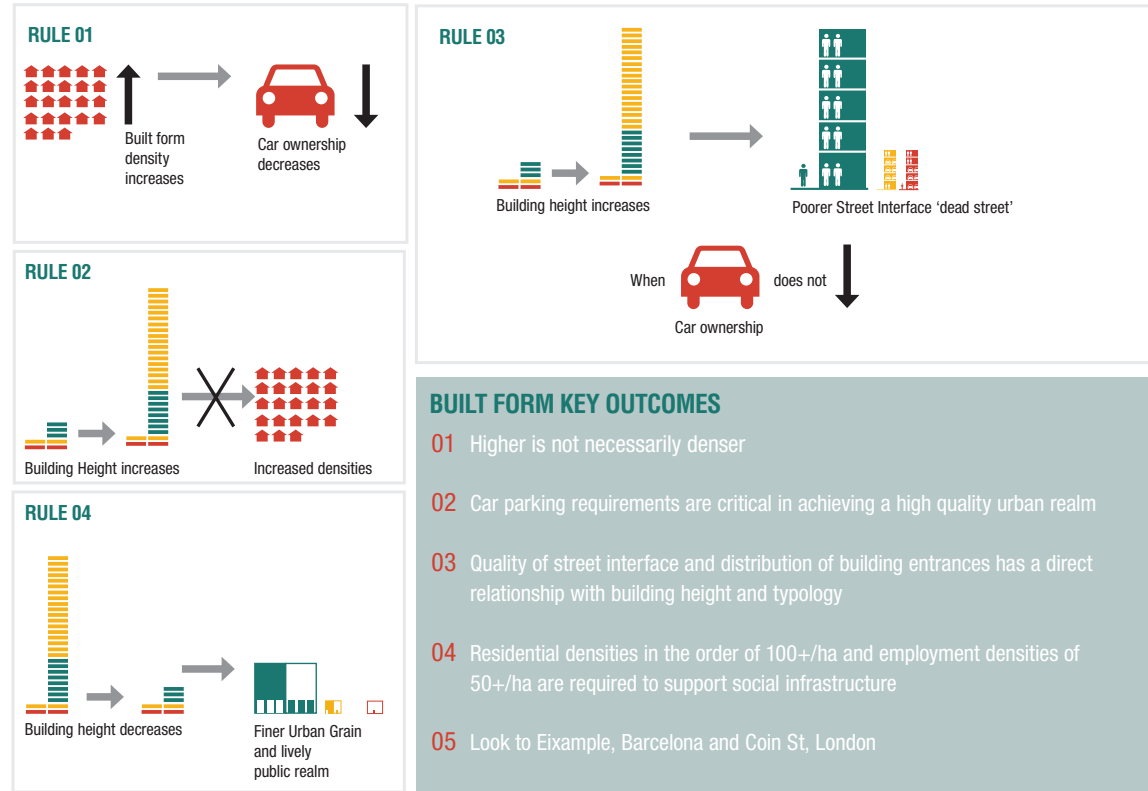
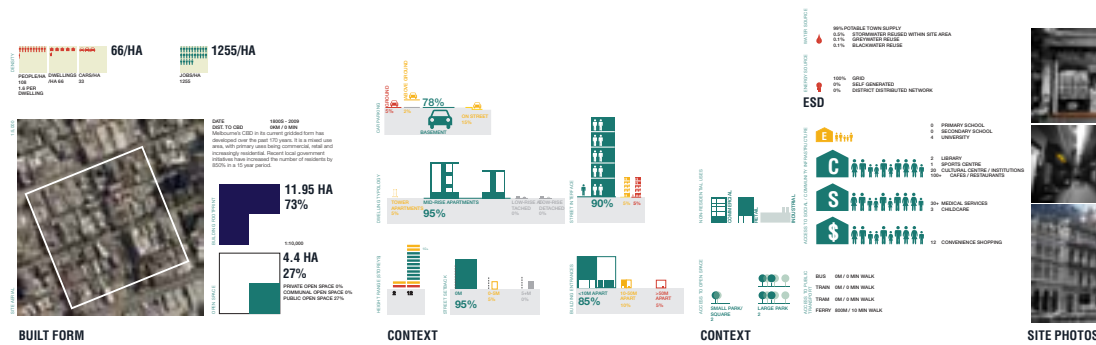
# SOUTHBANK STRUCTURE PLAN GLOBAL DENSITY STUDY



The Global Density Study was a qualitative and quantitative study undertaken across 10 cities to establish the criteria and quantum for quality urban environments, and in particular how Southbank in Melbourne needed to change to become a sustainable and liveable neighbourhood.

In exploring car ownerships, densities, distribution of open space, building typologies, land use, setbacks, building entries, social and community infrastructure; we were able to benchmark Southbank against other known and recognizable urban areas of the world.

## CASE STUDY: MELBOURNE CBD



- ### BUILT FORM KEY OUTCOMES
- 01 Higher is not necessarily denser
  - 02 Car parking requirements are critical in achieving a high quality urban realm
  - 03 Quality of street interface and distribution of building entrances has a direct relationship with building height and typology
  - 04 Residential densities in the order of 100+/ha and employment densities of 50+/ha are required to support social infrastructure
  - 05 Look to Eixample, Barcelona and Coin St, London

## THE RESULTS: ALL

● BEST PERFORMERS >80% POSITIVE  
● WORST PERFORMERS >80% NEGATIVE

	POPULATION	DWELLING	CARS	CARS/DWELLING	EMPLOYMENT	HEIGHT	CAR PARK LAYOUT	STREET INTERFACE	BUILDING ENTRANCES	OPEN SPACE	COMMUNITY/SOCIAL	PUBLIC TRANSPORT	ESD
01 EIXAMPLE, BARCELONA	230/HA	140	0.6/	78/HA	8	●	●	●	●	●	●	●	●
02 MID LEVELS, HONG KONG	118/HA	15	0.1/	45/HA	45	●	●	●	●	●	●	●	●
03 COIN ST, LONDON	100/HA	20	0.2/	300/HA	9	●	●	●	●	●	●	●	●
03 BORNEO SPORBURG	100/HA	50	0.5/	2.5/HA	8	●	●	●	●	●	●	●	●
03 BERCY, PARIS	100/HA	50	0.5/	16/HA	9	●	●	●	●	●	●	●	●
03 BATTERY PARK, NY	100/HA	50	0.5/	830/HA	30	●	●	●	●	●	●	●	●
07 MELBOURNE CBD	66/HA	33	0.5/	1255/HA	12	●	●	●	●	●	●	●	●
08 BEDDINGTON ZERO	50/HA	12	0.2/	10/HA	3	●	●	●	●	●	●	●	●
09 SOUTHBANK, MELB	41/HA	41	1.0/	252/HA	92	●	●	●	●	●	●	●	●
10 LONG BEACH, CA	24/HA	24	1.0/	92/HA	30	●	●	●	●	●	●	●	●

# Southbank Structure Plan – Urban Density Study

AECOM